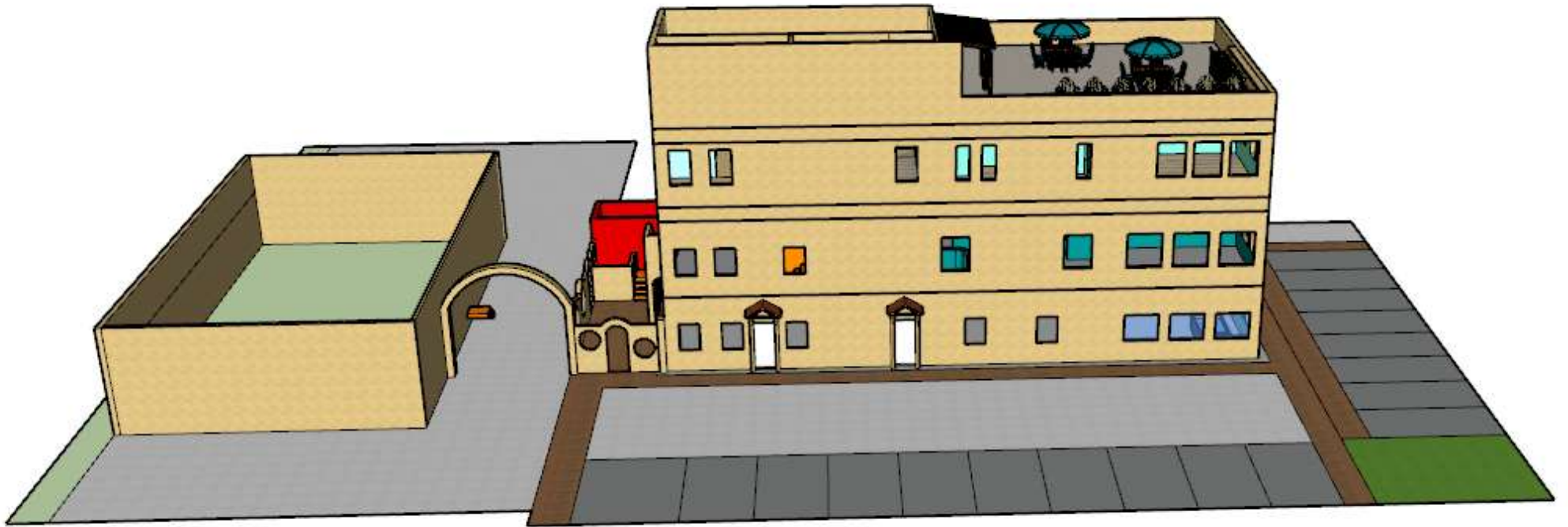
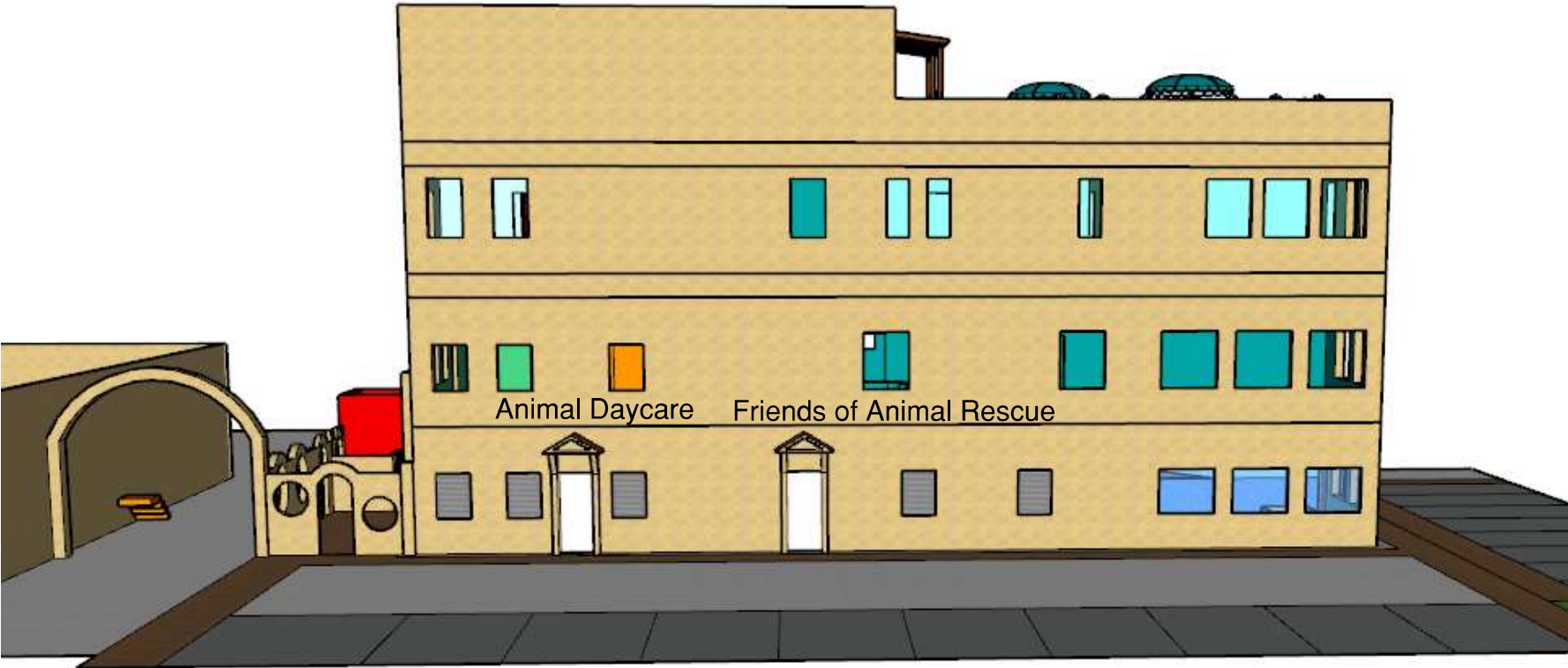


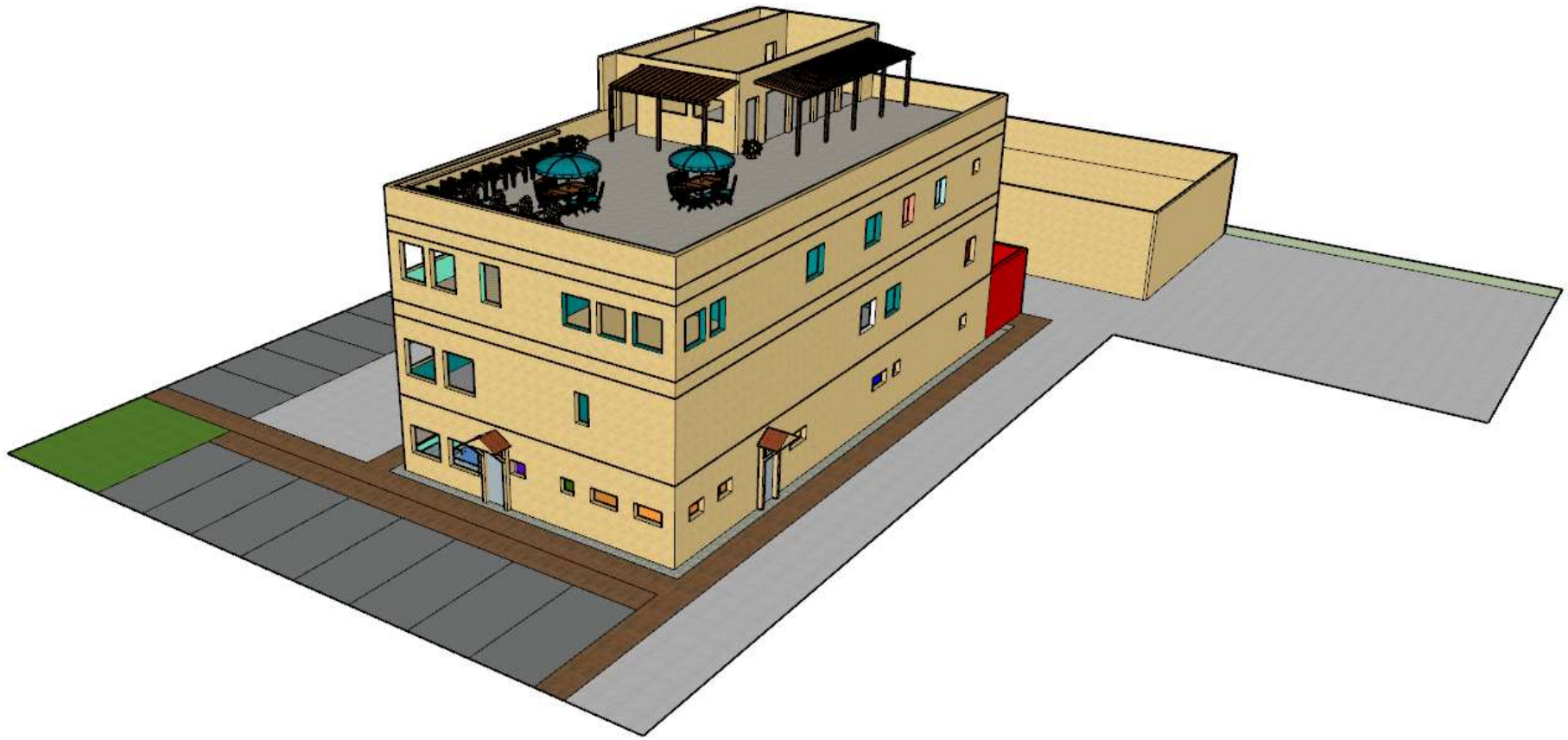
Friends of Animal Rescue
Preliminary Design



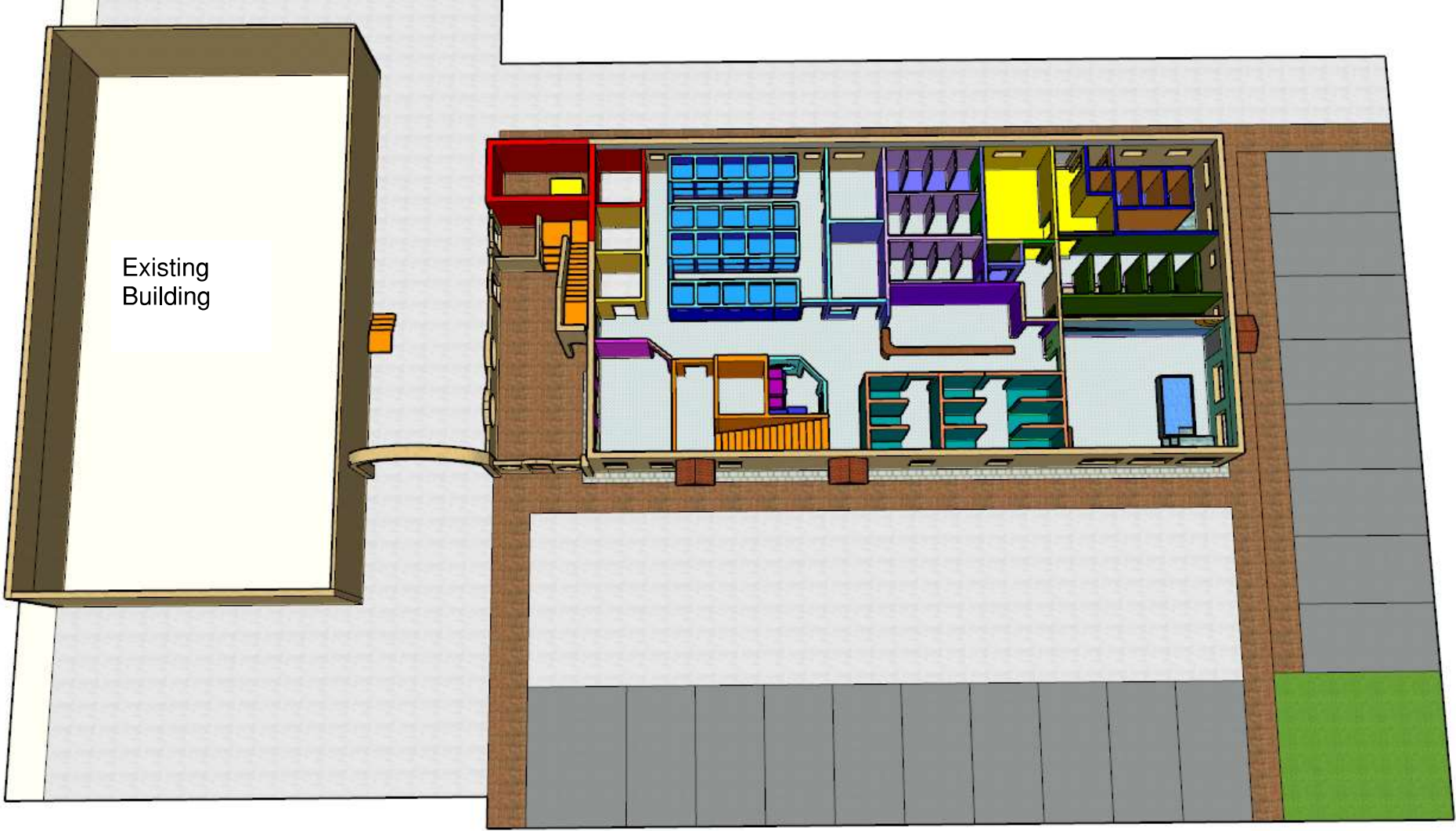
Front of Building



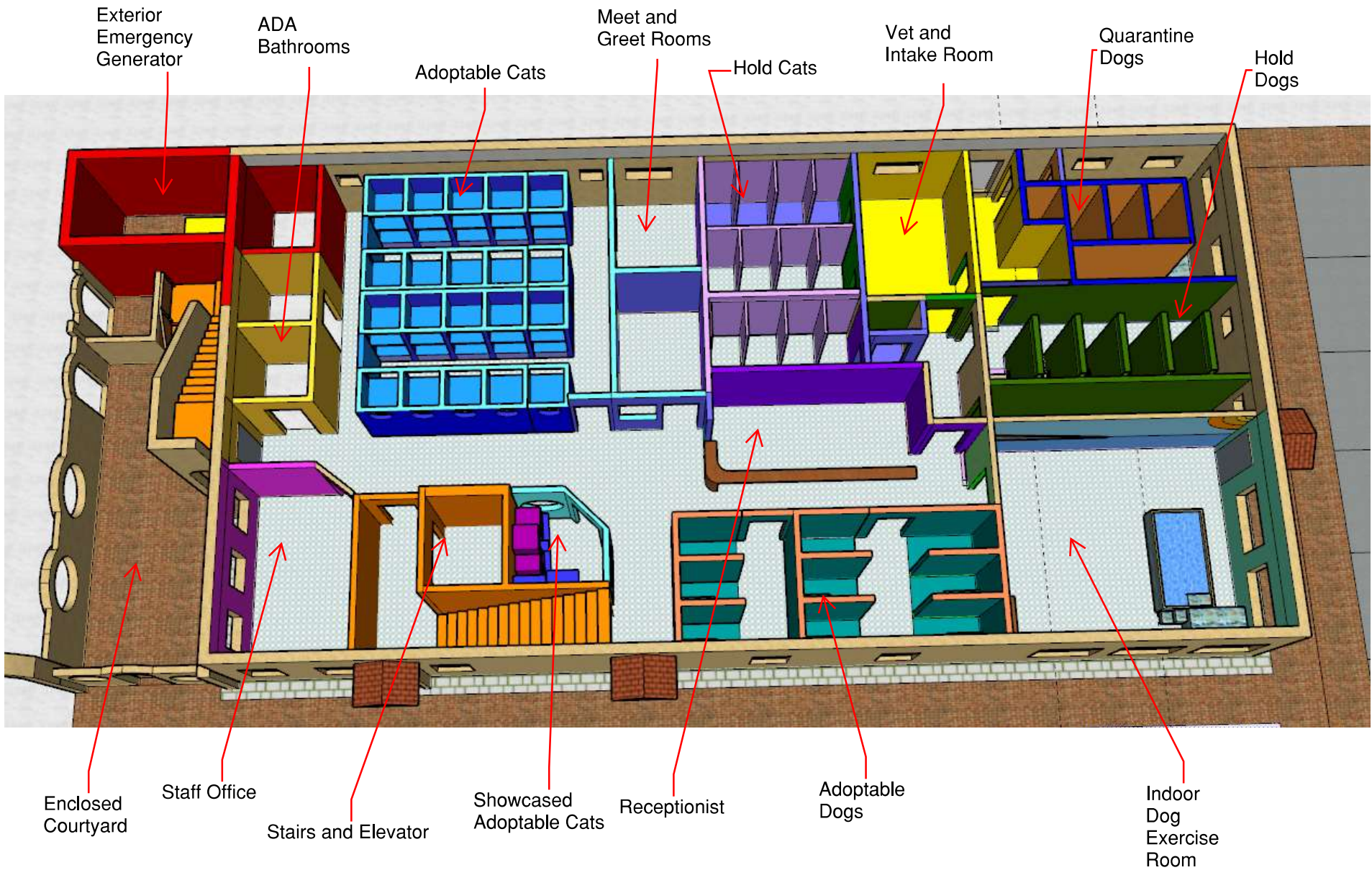
Back of Building



Friends of Animal Rescue
1st Floor - Animal Care



Friends of Animal Rescue
1st Floor - Animal Care



Hold Animals - No Public Access



Hold Animals - No Public Access - $43' \times 23' = 1,125$

East side Public Access - ADA Bathrooms $38' \times 23' = 874$

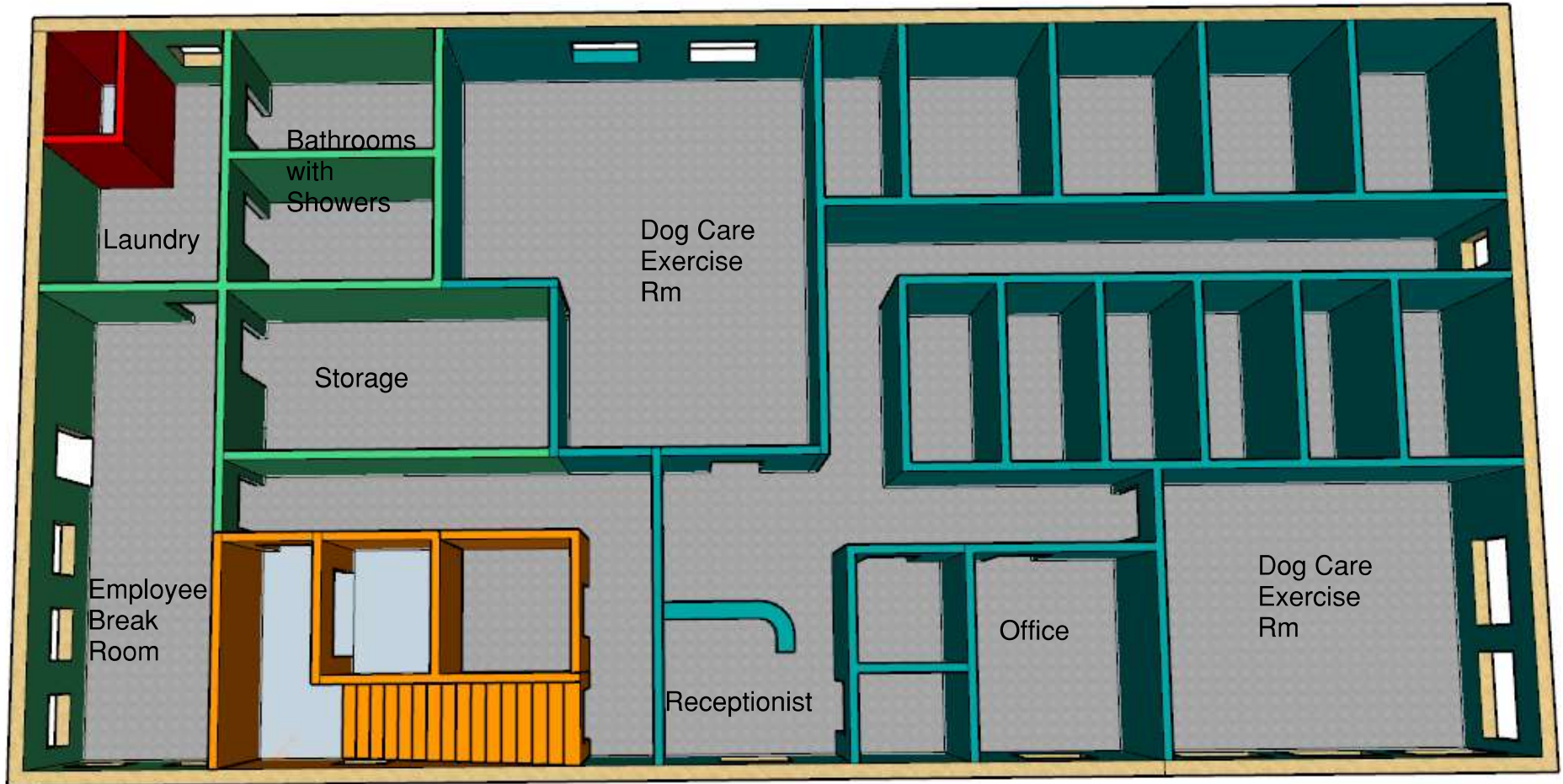
West side Public Access - Offices, Stairs, Adoptable Pets = $17' \times 82' = 1,394$

Total Public Access = $874 + 1,394 = 2,268$

Mechanical Room 5'
x 7' = 35

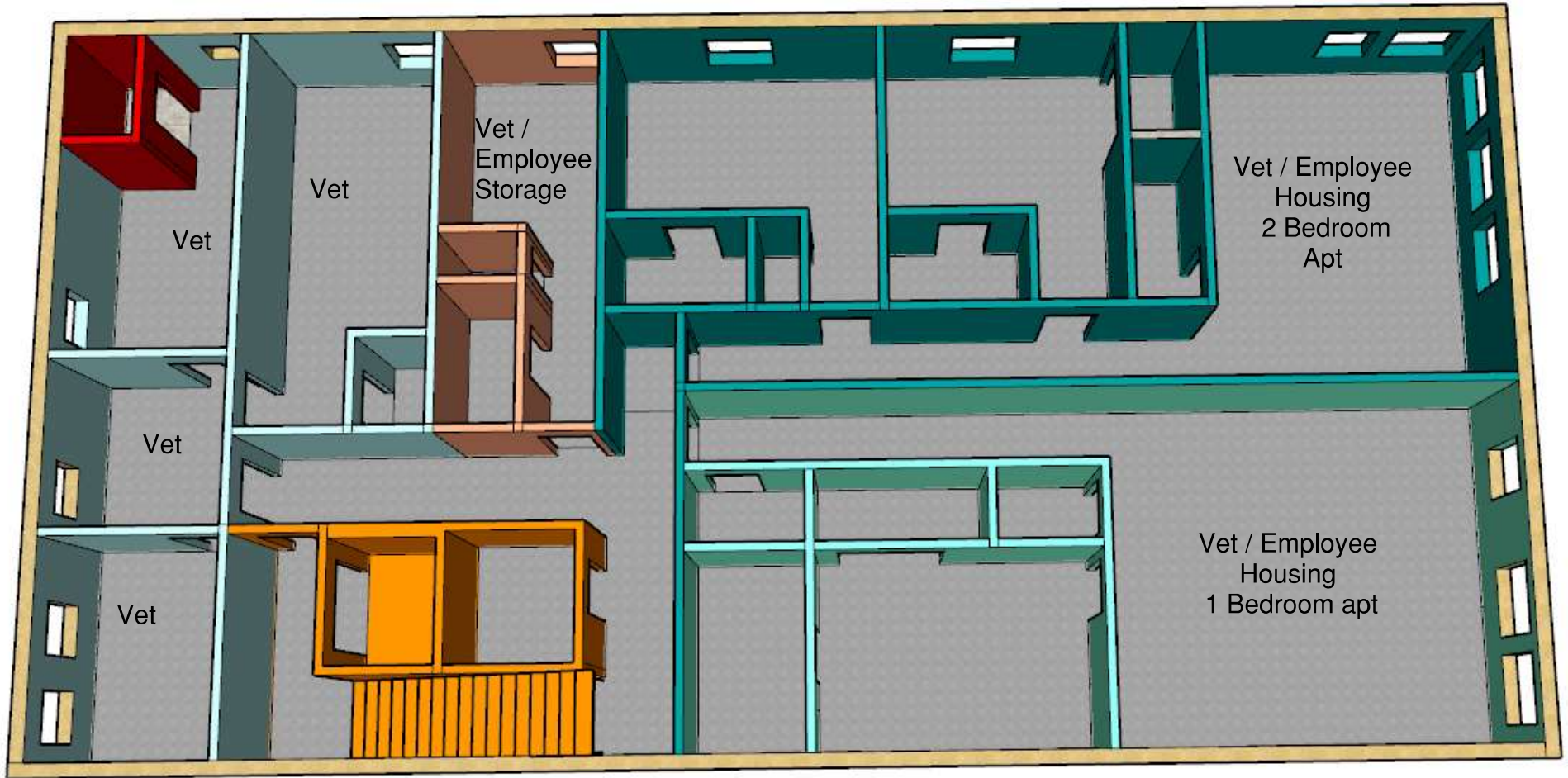
Animal Rescue
Admin. / Staff Space
Approx. 41 x 30' = 1,230
(Less Stairs, Elevator and Mech Rm)
=935

Animal Care Center
41' x 52' = 2,132



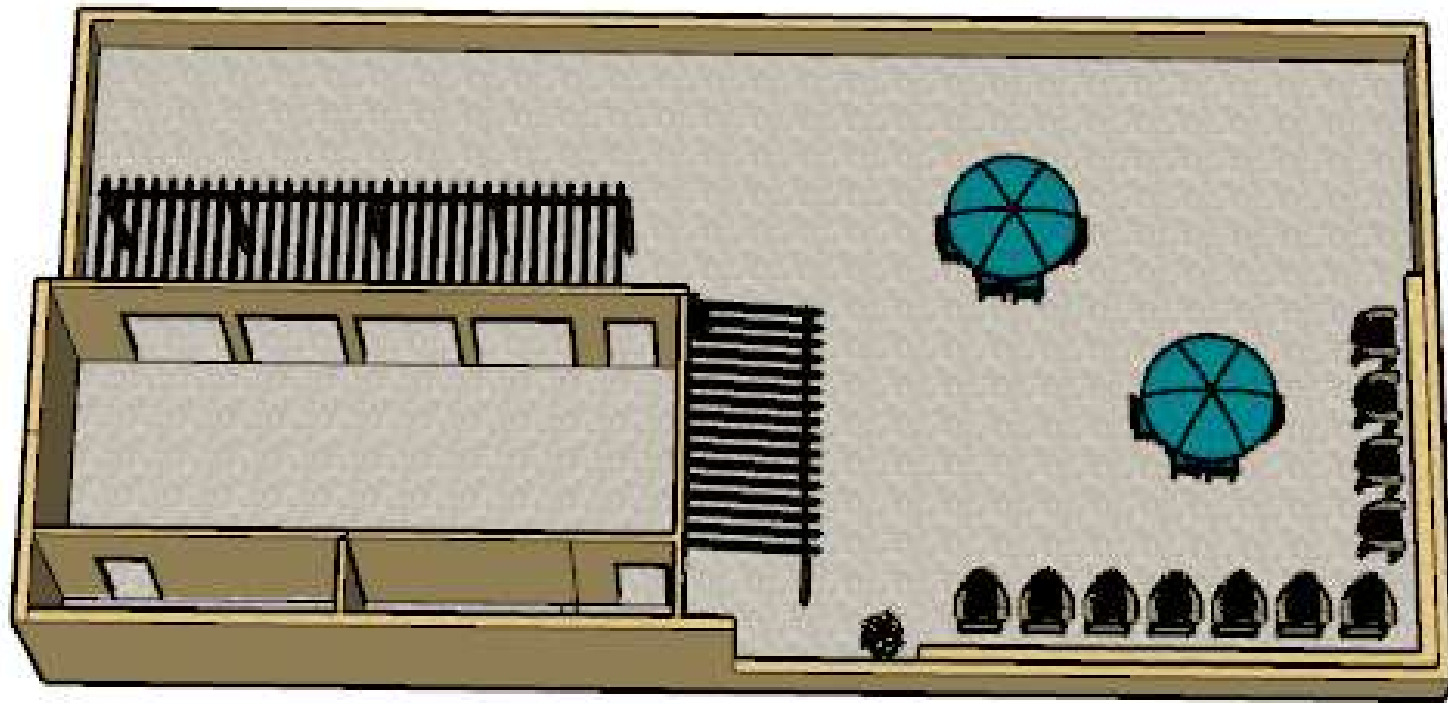
Stairs, Elevator
13' x 20' = 260

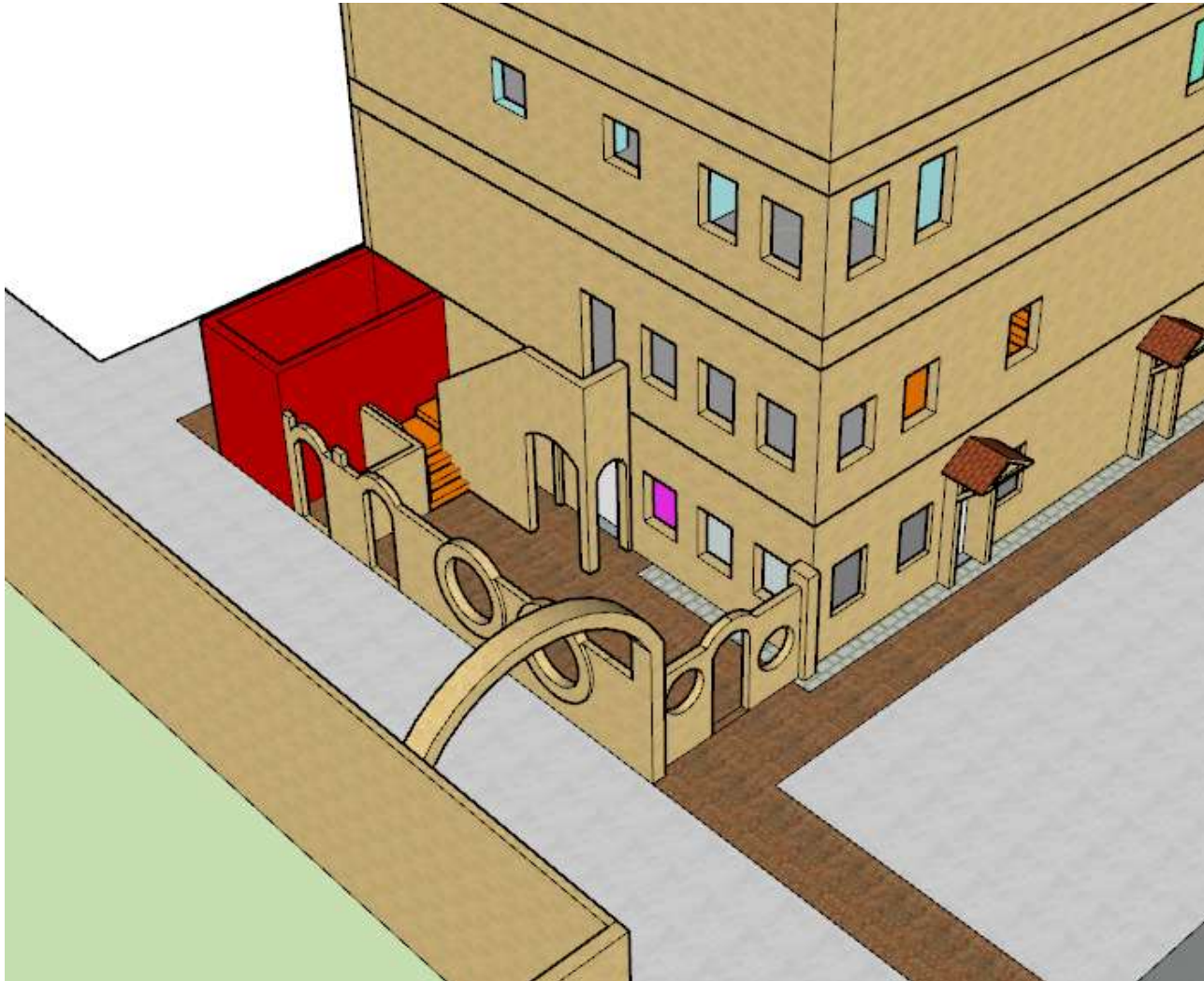
3rd Floor

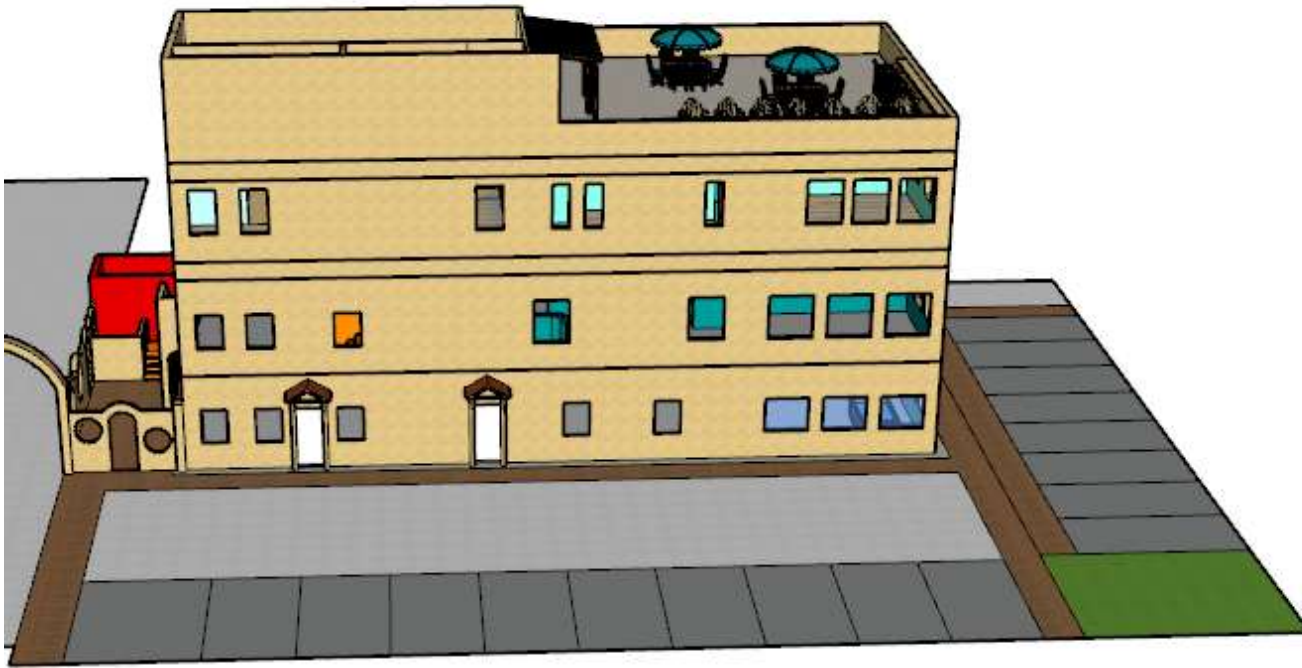


Vet Area - 31' x 41 = 1271
2 Apts

Roof Top







Outside Measurements
46' Tall at highest
33' at Low part plus 42" wall railing
84' Width
43' Depth

	SQ Ft	Parking		
Floor 1 Pubic Access	2,268			
Floor 1 No Public Access	1,125			
Floor 2 No Public Access (Animal Rescue Support Facilities)	1,230			
Floor 2 Dog Daycare	2,132			
Floor 3 Vet Offices	1271			
Floor 3 Employee Housing (2 Apts - 3 Bedrooms)				